



**SOUTH AUSTRALIA
VICTORIA
NEW SOUTH WALES
OCTOBER 2023**

AH – Southern and
South Eastern zone

Potential AH –
Northern zone

GENIE



**New high-yielding, mid-slow
AH* granting growers' wishes**

VARIETY OVERVIEW

GENIE[®] is an exceptionally high yielding, mid-slow AH* wheat and is an excellent alternative to RockStar[®] in >3t/ha yield environments. In these environments the variety offers medium-high rainfall growers a 1-2% yield improvement compared to RockStar[®].

GENIE[®], with its slightly later maturity than Rockstar[®] and long coleoptile, enables earlier sowing opportunities to be maximised. The variety's long coleoptile allows it to be sown deeper to seek moisture, an advantage when sowing into marginal moisture conditions.

Preliminary internal sprouting tolerance testing indicates GENIE[®] has good sprouting tolerance and is rated 5p. This is an improvement on RockStar[®] and comparable to Scepter[®].

GENIE[®] has an excellent disease resistance package including useful stem rust (MRp) and stripe rust (MRMSP) resistances and is moderately susceptible to CCN. It offers good test weight and has a medium plant height, similar to RockStar[®]. Additionally, GENIE[®] has a moderate grain size.

*GENIE[®] is classified as AH in the Southern and South Eastern zones and is pending an AH classification in the Northern classification zones.

GENIE[®] is available for planting in 2024 through your local reseller or InterGrain Seedclub member.

VARIETY AT A GLANCE



HIGH
YIELDING



MODERATE
GRAIN SIZE



MID-SLOW
SPRING
MATURITY



LONGER
COLEOPTILE
LENGTH



\$3.50/t
EX GST



CCN
(MSP)



STEM RUST
(MRp)



YELLOW LEAF
SPOT (MSP)



STRIPE RUST
(MRMSP)



GOOD PRE HARVEST
SPROUTING
TOLERANCE

PLANT FEATURES

		GENIE [®]	ROCKSTAR [®]	COOLAH [®]	COOTA [®]	CUTLASS [®]	LRPB TROJAN [®]	SCEPTER [®]
Classification	Southern zone	AH	AH	AH	AH	APW	APW	AH
	South eastern zone	AH	APH	APH	APH	AH	APW	AH
	Northern zone	FEED (potential AH)	APH	APH	APH	APH	ASW	AH
Maturity		Mid-Slow	Mid-Slow	Mid-Slow	Mid-Slow	Mid-Slow	Mid-Slow	Mid
Coleoptile Group		Long	Medium	-	-	Long	Medium	Medium-Short
Plant Height		Medium	Medium	-	-	Medium	Medium	Medium

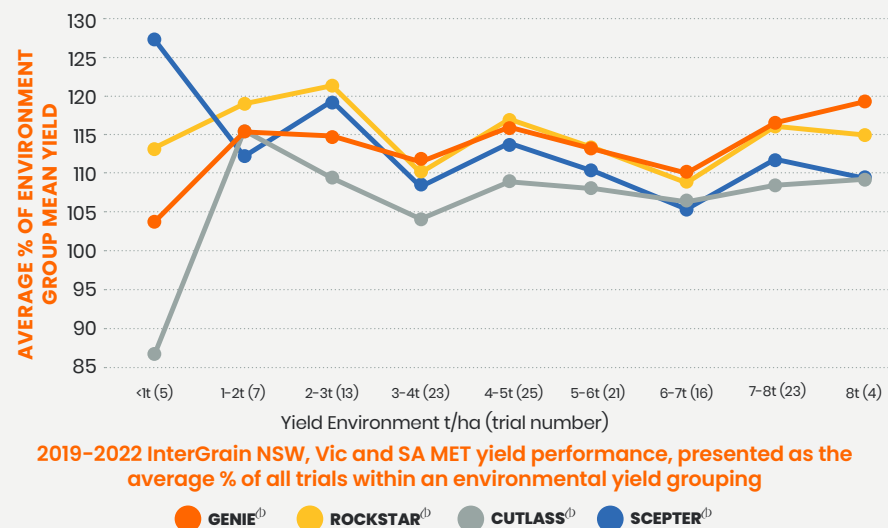
Source: 2023 SA, Vic and NSW Crop Sowing Guide, Wheat Quality Australia and InterGrain wheat breeding.

DISEASE RATINGS

	GENIE [®]	ROCKSTAR [®]	COOLAH [®]	COOTA [®]	CUTLASS [®]	LRPB TROJAN [®]	SCEPTER [®]
Leaf Rust	MSP	S	RMR	MR	RMR	MR#	MSS
Stem Rust	MRp	MRMS	MR	RMR	R	RMR	MRMS
Stripe Rust (2023 East Coast)	MRMSP	S	MSS	S	MSS	S	MSS
Black Point	-	MSS	S	MRp	MS	MRp	MS
CCN	MSP	MSS	S	MR	MR	MR	MRMS
Crown Rot	-	S	MSS	MSS	S	MSS	MSS
Powdery Mildew	-	SVS	S	S	MSS	S	SVS
Septoria Tritici Blotch	MS-Sp	S	MSS	S	MSS	S	S
Yellow Leaf Spot	MSP	MRMS	MSS	MSS	MSS	MSS	MRMS

GENIE[®] ratings based on InterGrain provisional ratings. Source: 2022 NVT Pathology consensus disease ratings. p= provisional rating.
R = Resistant, RMR = Resistant to Moderately Resistant, MR = Moderately Resistant, MRMS = Moderately Resistant to Moderately Susceptible, MS = Moderately Susceptible, MSS = Moderately Susceptible to Susceptible, S = Susceptible, SVS = Susceptible to Very Susceptible, VS = Very Susceptible

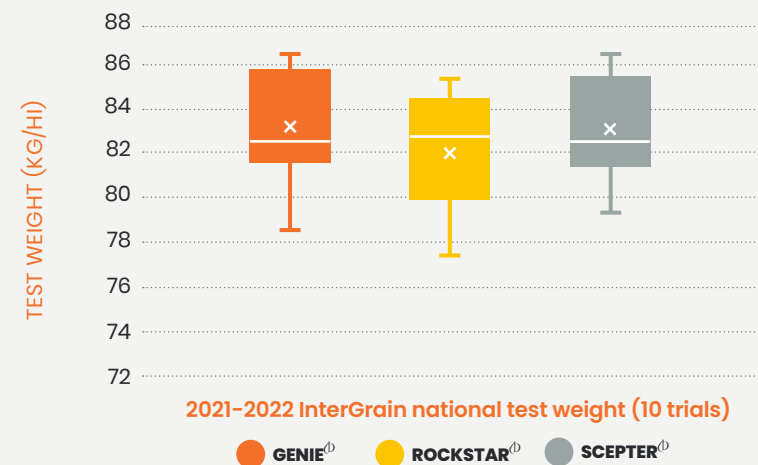
YIELD PERFORMANCE



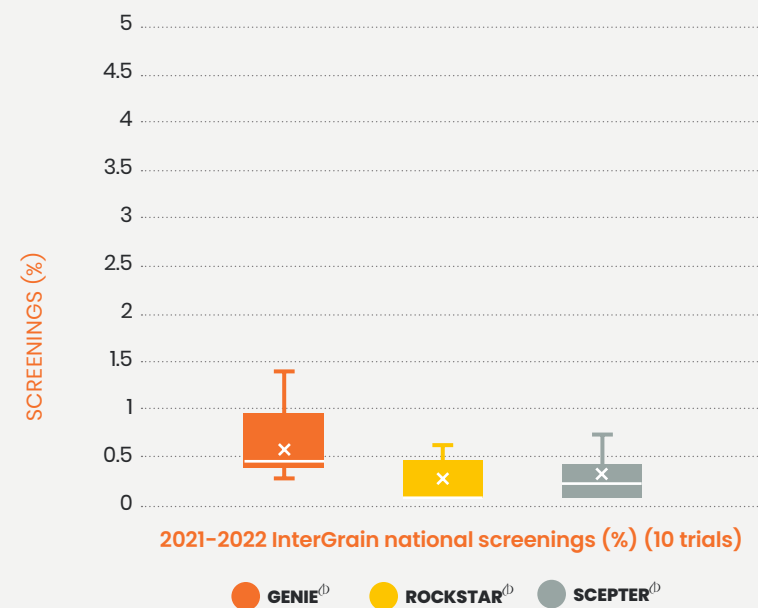
Genie[®] at Inverleigh, Victoria in early August 2023.

GRAIN QUALITY

TEST WEIGHT



SCREENINGS





INTERGRAIN CONTACTS

South Australia & Southern NSW
Rehn Freebairn
0447 711 905
rfreebairn@intergrain.com

Northern NSW
Matt Naumann
0460 292 620
mnaumann@intergrain.com

Victoria
David Brunton
0439 978 133
dbrunton@intergrain.com

PBR/EPR

GENIE[®] is protected by Plant Breeder's Rights and is subject to an end point royalty of \$3.50/tonne GST exclusive.

Disclaimer

The material contained in this publication is considered true and correct as at the date of this publication. The publication is a general guide only prepared solely for the purpose of providing general information in connection with InterGrain, its business and, if applicable the services and products provided by InterGrain. InterGrain does not warrant or guarantee the accuracy, completeness or currency of the publication material and information. InterGrain strongly recommends the publication reader independently research or obtain independent professional advice in connection with the use of the publication material and information for any business decision.

Neither InterGrain, its officers, directors, affiliates or employees, are liable for any cost, expense, damage, liability or loss suffered or incurred by a publication reader or any other party related in any way to the publication reader as a result of the use of publication material and information.

Publication Date: November 2023 © InterGrain Pty Ltd 2023. All rights reserved.

intergrain.com